

## *Windscreen Washer Unit*

When refilling windscreen wiper fluids, it pays off to bank on quality brands. In addition to sophisticated and practical refill units, SONAX offers suitable summer and winter windshield cleaners in bulk containers. All cleaners provide clear view within seconds, can be used with fan jet nozzles, and are compatible with paint, rubber and plastics.

---

**Filling concepts** 50 - 51

---

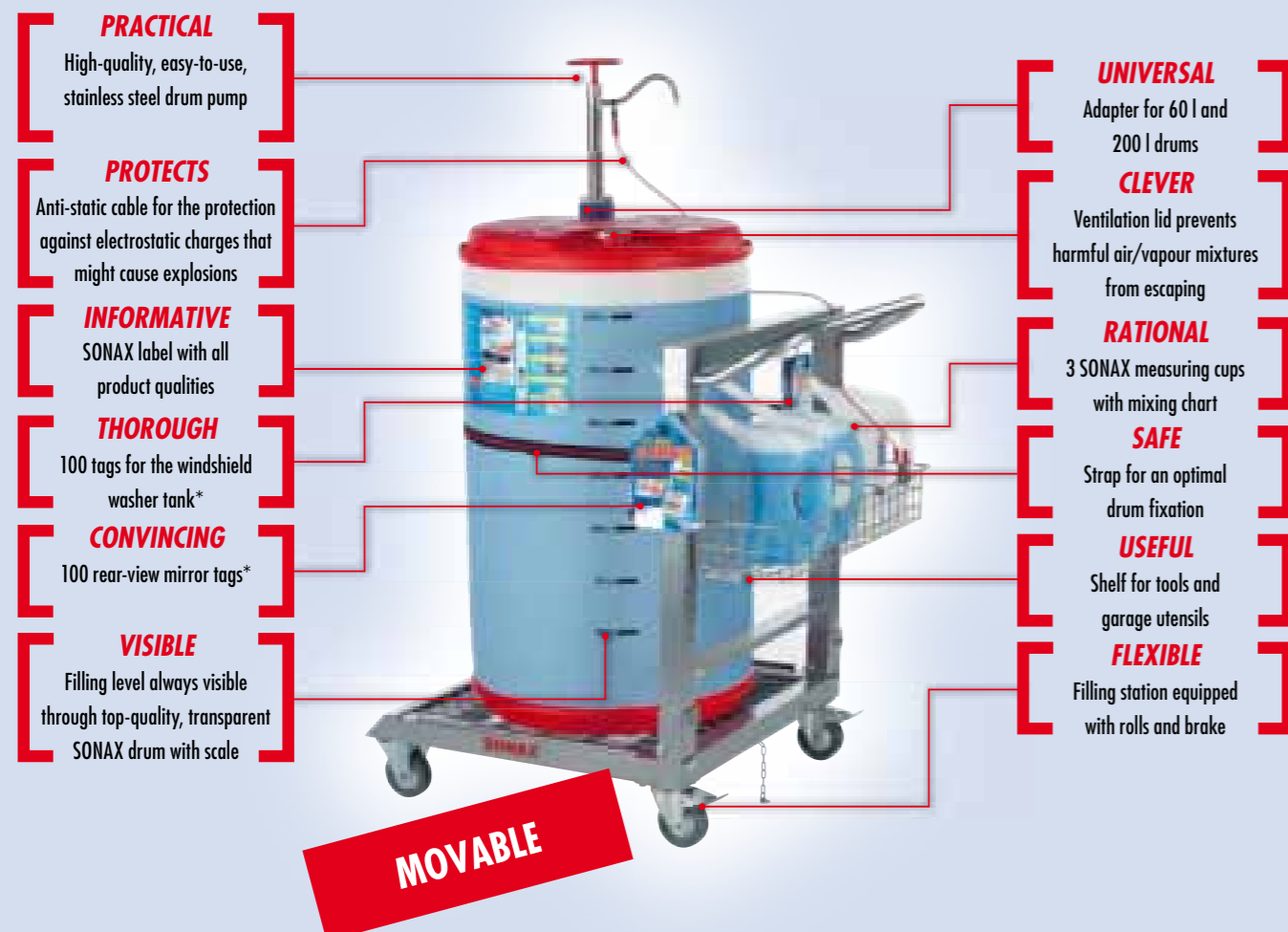
**Products and accessories** 52 - 53



**MADE IN GERMANY**

## Mobile SONAX filling station

**For the dispensing directly at the workspace. Everything on one wagon – clean, compact and tidy: product, advertising material\* and accessories.**



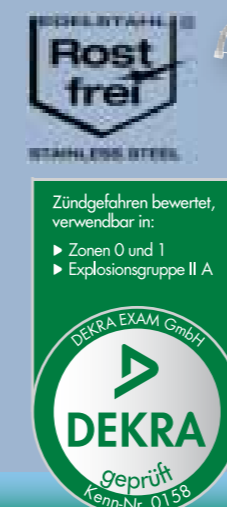
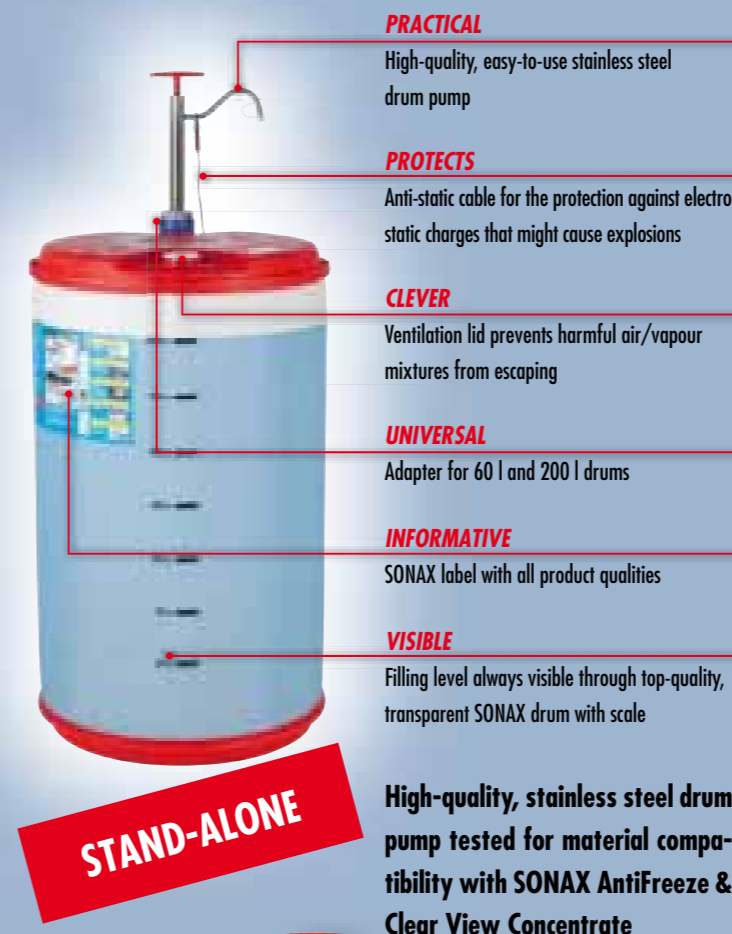
### TÜV certified

The certified filling station and its entire construction – provided that it is used correctly with SONAX AntiFreeze & Clear View Concentrate – does not possess any own potential sources of ignition, and can be realized in this form from an explosion protection technical perspective. A risk analysis according to prEN 1127-1 has been carried out.

\*German version. Open printing data available on request.

## Stationary SONAX filling station

**For the dispensing in the warehouse**



**High-quality, stainless steel drum pump tested for material compatibility with SONAX AntiFreeze & Clear View Concentrate**

**No signs of wear in the long-term test with more than 200,000 actuations.**

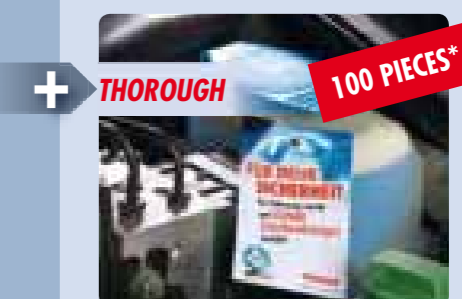
The stainless steel pump, provided that it is used correctly with SONAX AntiFreeze & Clear View Concentrate, does not possess any own potential sources of ignition and can be used in explosion-risk areas.

**Including add-ons to the stationary filling station**



So that the service can be carried out quickly and professionally. Measuring cup with practical mixing chart. The integrated, flexible hose facilitates the filling.

The SONAX tags at the windshield washer tank and the rear-view mirror show your customers that the windshield washer is winterproof, and make a professional impression.



Tags with fixing wire for the windshield washer tank.



Immediately visible: winterproof car with SONAX AntiFreeze & Clear View Concentrate.

### SONAX garage filling station movable

For dispensing the antifreeze directly at the workspace. The TÜV-certified, moveable filling station and its entire construction does not possess any own potential sources of ignition when used properly. Suitable for 60 l and 200 l drums of SONAX AntiFreeze & Clear View Concentrate. Consisting of:

- 1 x filling station
  - 1 x 496 641 stainless steel drum pump
  - 100 x 147 298 rear-view mirror tags\*
  - 100 x 146 498 windshield washer tank tags\*
  - 3 x 498 300 2-litre measuring cup with flexible hose and mixing chart
- Everything on one wagon – clean, compact and tidy.

W 765 x D 1100 x H 305

**Art.No. 496 700 1 pc.**



### SONAX Collection pan for garage filling station

Collection pan for moveable filling station (Art. No. 496 700).

Capacity: 20.2 litres

Material: metal sheet



**Art.No. 496 800 1 pc.**

### SONAX garage filling station stationary

For dispensing the antifreeze in the warehouse. The stationary filling station is suitable for 60 l and 200 l drums of SONAX AntiFreeze & Clear View Concentrate.

Consisting of:

- 1 x 496 641 stainless steel drum pump
- 100 x 147 298 rear-view mirror tags\*
- 100 x 146 498 windshield washer tank tags\*
- 3 x 498 300 2-litre measuring cup with flexible hose and mixing chart

**Art.No. 496 841 1 pc.**



### SONAX stainless steel drum pump

High-quality, stainless steel drum pump for SONAX AntiFreeze & Clear View Concentrate. The stainless steel pump, provided that it is used correctly, does not possess any own potential sources of ignition and can be used in explosion-risk areas. Rustproof. No signs of wear in the long-term test with more than 200,000 actuations.

**Art.No. 496 641 1 pc.**



Zündgefahren bewertet  
verwendbar in:  
▶ Zonen 0 und 1  
▶ Explosionsgruppe II A



### SONAX Measuring Cup with flexible hose

Two-litre measuring cup with practical mixing chart for SONAX AntiFreeze & Clear View Concentrate. The integrated, flexible hose facilitates the filling.



**Art.No. 498 300 1 pc.**

### SONAX Rearview Mirror Tags

For attaching on the rearview mirror. Immediately visible to your customers: The vehicle is winterproof with SONAX AntiFreeze & Clear View Concentrate.

(German version)



**Art.No. 147 298 100 pc.**

### SONAX Windscreen Washer Tank Tags

With fixing wire to affix on the windscreen washer tank. The tags give your customers the assurance that the windscreen washer unit is winterproof, and additionally leaves a professional impression.

(German version)



**Art.No. 146 498 100 pc.**

### SONAX AntiFreeze & Clear View Concentrate

Windscreen washer antifreeze with citrus fragrance. Removes typical winter dirt and provides a clear view. Prevents the windshield washer and nozzles from freezing. Compatible with paint, rubber and plastics. Does not cause tension cracks and dull spots on headlamp diffusers. Well suitable for XENON headlamps and plastic diffusers in clear glass design. With glycerine. Keeps rubber smooth. Anti-lime formula – mixable with tap water (all hardness degrees).



**Art.No. 332 705 25 L**

**Art.No. 332 805 60 L**

**Art.No. 332 905 200 L**

Frost protection up to	Rate of antifreezer	Rate of water
-30°C	2	1
-20°C	1	1
-10°C	1	2

### SONAX Windscreen Wash Concentrate 1:10 citrus

Cleaning concentrate for the windscreen and headlight washer units in summer. Removes insects, oil and silicone dirt. Provides clear vision in seconds without streaks or smears. Compatible with paintwork, rubber and plastics. Does not induce stress cracks or blind spots on sensitive anti-glare headlights. Also ideally suitable for high quality XENON headlights and plastic anti-glare headlights in clear glass optic. Thanks to its anti-lime scale formula it can be mixed with tap water in all hardness grades. Suitable with fan spray nozzles. With fresh citrus fragrance. 1 litre gives 11 litres of cleaning fluid.



**Art.No. 260 705 25 L**

**Art.No. 260 800 60 L**

\*German version. Open printing data available on request.